

List of pages in this Trip Kit

Trip Kit Index

Airport Information For GMMH

Terminal Charts For GMMH

Revision Letter For Cycle 16-2023

Change Notices

Notebook

General Information

Location: DAKHLA XJU
ICAO/IATA: GMMH / VIL
Lat/Long: N23° 43.10', W015° 55.92'
Elevation: 36 ft

Airport Use: Public
Daylight Savings: Observed
UTC Conversion: +0:00 = UTC
Magnetic Variation: 5.0° W

Fuel Types: 100 Octane (LL), Jet A-1
Customs: Yes
Airport Type: IFR
Landing Fee: Yes
Control Tower: Yes
Jet Start Unit: No
LLWS Alert: No
Beacon: No

Sunrise: 0719 Z
Sunset: 1818 Z

Runway Information

Runway: 03
Length x Width: 9843 ft x 148 ft
Surface Type: bitu
TDZ-Elev: 36 ft
Lighting: Edge, REIL

Runway: 21
Length x Width: 9843 ft x 148 ft
Surface Type: bitu
TDZ-Elev: 30 ft
Lighting: Edge, REIL

Communication Information

Dakhla Tower: 118.100
Dakhla Approach: 119.500

GMMH/VIL

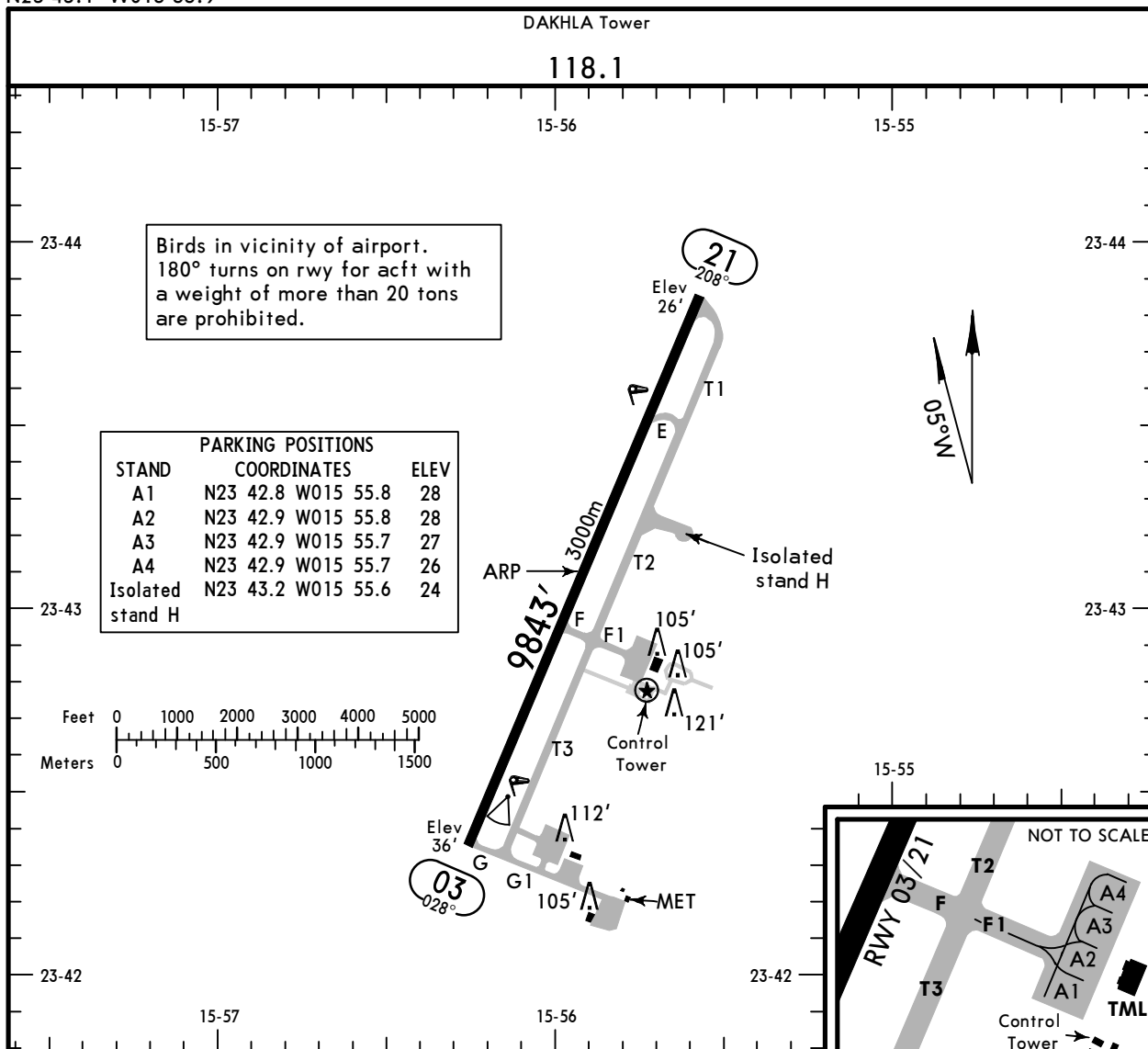
Apt Elev **36'**
N23 43.1 W015 55.9

JEPPESEN

28 APR 23 **(10-9)**

DAKHLA

DAKHLA INTL



ADDITIONAL RUNWAY INFORMATION

RWY					USABLE LENGTHS			
					Threshold	Glide Slope	TAKE-OFF	WIDTH
03	RL (60m)	REIL	PAPI-L (angle 3.00°)	RVR		8810' 2685m		148'
21	RL (60m)	REIL	PAPI-L (angle 3.00°)					45m

TAKE-OFF

AIR CARRIER (JAA)

All Rwys

	LVP must be in force RCLM (DAY only) or RL	RCLM (DAY only) or RL
A		
B	250m	400m
C		
D	300m	

GMMH/VIL



Standard

22 MAR 19

10-9S

Eff 28 Mar

DAKHLA
DAKHLA INTL

STRAIGHT-IN RWY		A	B	C	D
03	ILS Z	236'(200') R1200m	240'(204') R1200m	240'(204') R1200m	250'(214') R1200m
	① LOC	490'(454') R1500m	490'(454') R1500m	490'(454') R2100m	490'(454') R2100m
	① RNAV (LNAV)	480'(444') R1500m	480'(444') R1500m	480'(444') R2100m	480'(444') R2100m
	① VOR	490'(454') R1500m	490'(454') R1500m	490'(454') R2100m	490'(454') R2100m
21	① RNAV (LNAV)	380'(354') R1500m	380'(354') R1500m	380'(354') R1600m	380'(354') R1600m

① Continuous Descent Final Approach.

CIRCLE-TO-LAND	100 KT	135 KT	180 KT	205 KT
After VOR	580'(544') V1500m	580'(544') V1600m	680'(644') V2400m	740'(704') V3600m

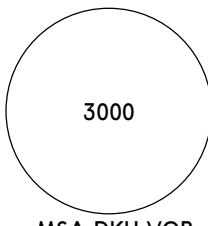
TAKE-OFF

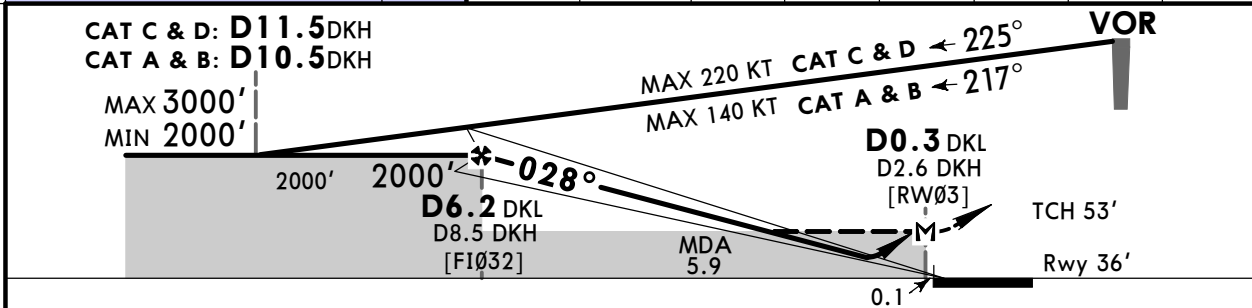
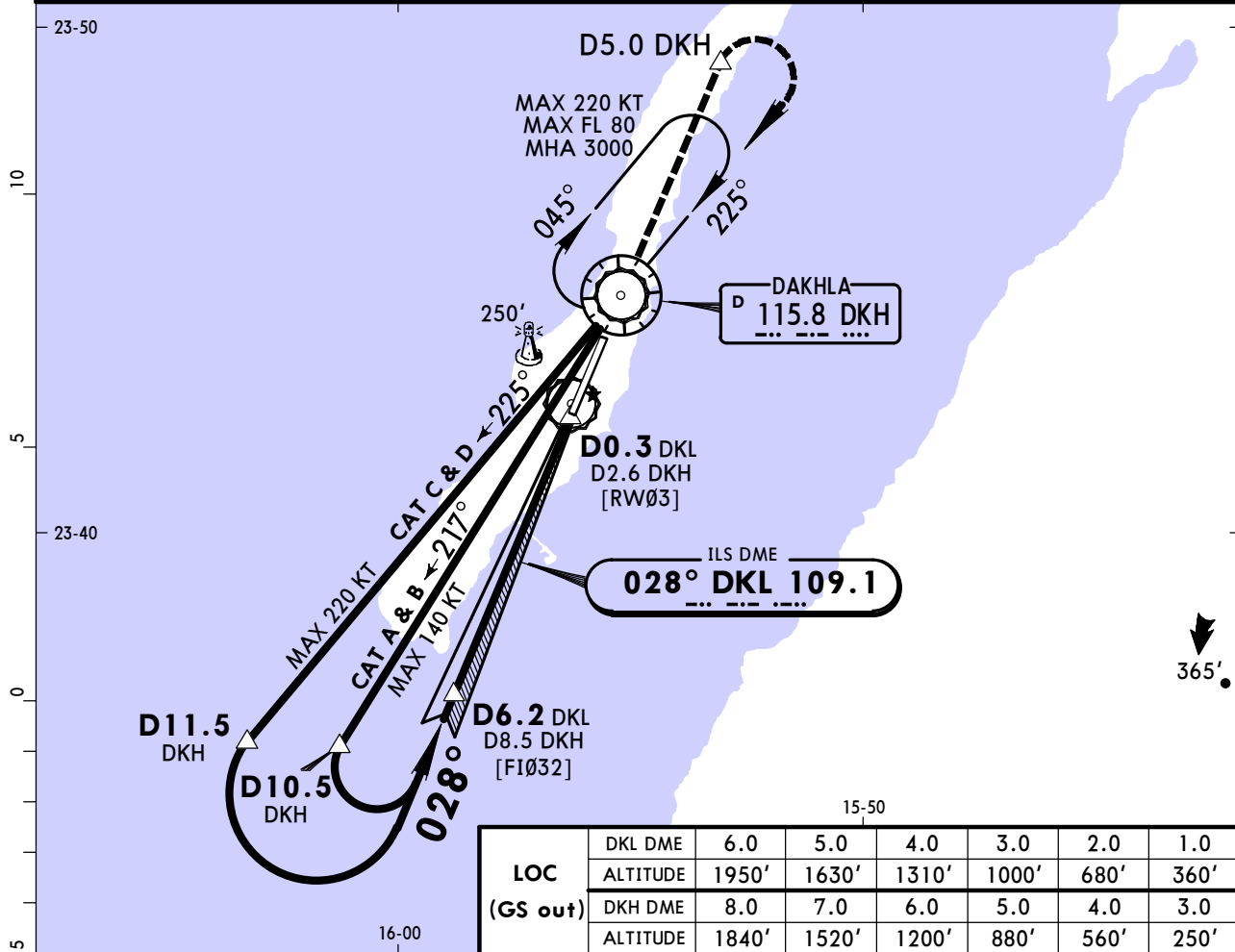
	Low Visibility Take-off		
	Day: RL & RCLM Night: RL	Day: RL or RCLM Night: RL	Adequate vis ref (Day only)
A	R300m	400m	500m
B			
C			
D			

GMMH/VIL
DAKHLA INTL

JEPPESSEN
7 AUG 20 **(11-1)**

DAKHLA
ILS Z Rwy 03

DAKHLA Approach			DAKHLA Tower			
119.5			118.1			
LOC DKL 109.1	Final Apch Crs 028°	D6.2 DKL 2000' (1964')	ILS DA(H) Refer to Minimums	Apt Elev 36' Rwy 36'		
MISSED APCH: Climb on RWY heading to D5.0 DKH, then turn RIGHT to VOR climbing to 3000', or as directed.						MSA DKH VOR
Alt Set: hPa		Rwy Elev: 1 hPa		Trans level: By ATC		Trans alt: 3000'
DKH DME required.						



Gnd speed-Kts	70	90	100	120	140	160	REIL PAPI-L	D5.0 DKH	
ILS GS or LOC Descent Angle	3.00°	372	478	531	637	743			849
MAP at D0.3 DKL/2.6 DKH									

STRAIGHT-IN LANDING RWY 03		
ILS	LOC (GS out)	
DA(H) A: 236' (200') BC: 240' (204') D: 250' (214')	MDA(H) 490' (454')	
A	RVR 1500m	
B	VIS 1600m	
C	2000m	
D	2400m	

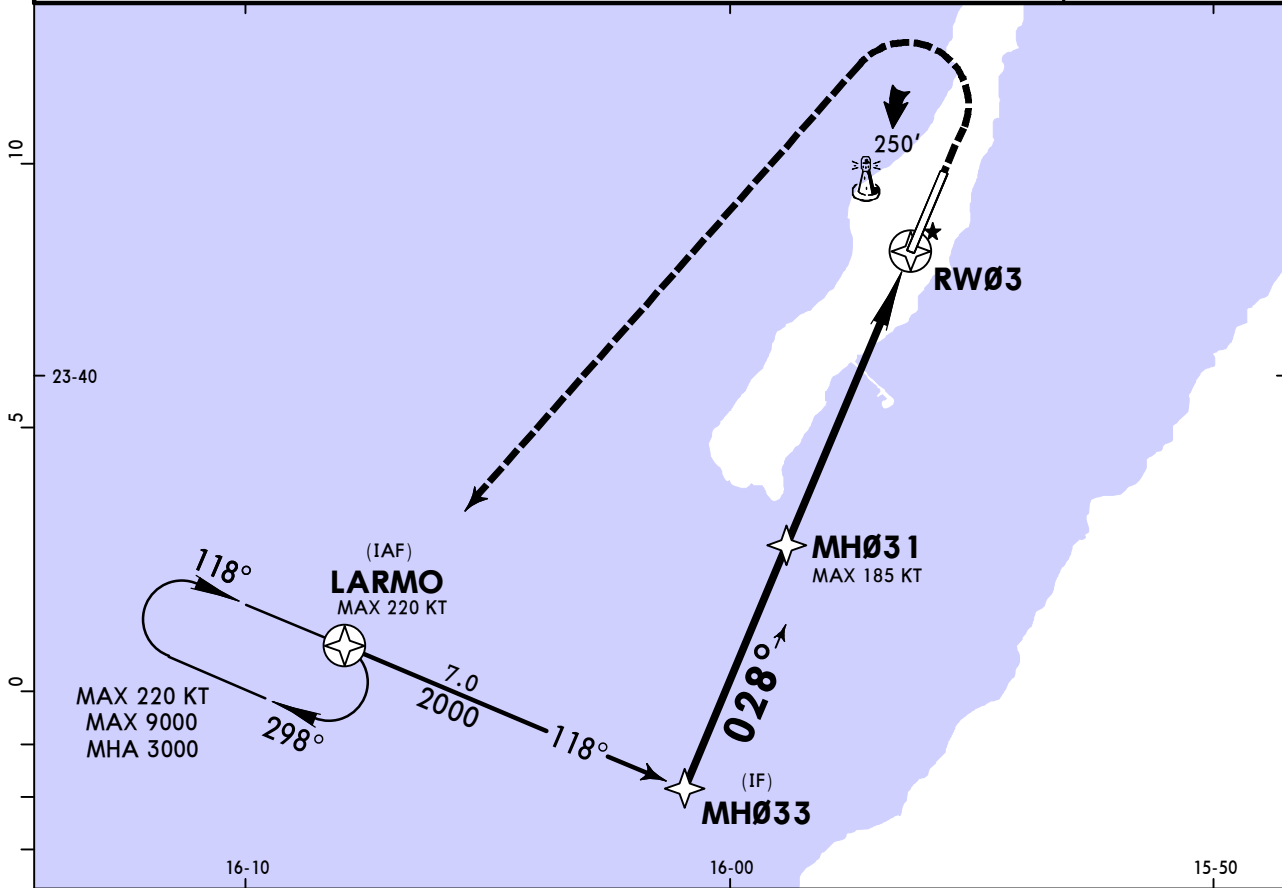
PANS OPS

GMMH/VIL
DAKHLA INTL

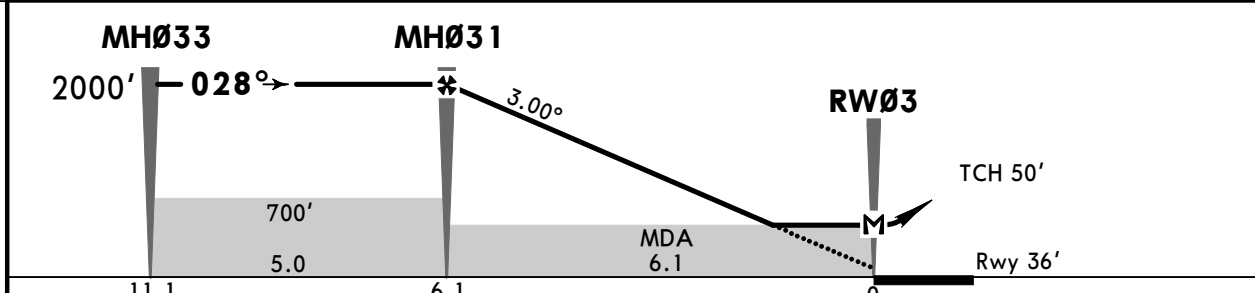
JEPPESEN
7 AUG 20 (12-1)

DAKHLA
RNAV (GNSS) Rwy 03

DAKHLA Approach				DAKHLA Tower		
119.5				118.1		
RNAV	Final Apch Crs 028°	MH031 2000' (1964')	LNAV MDA(H) 480' (444')	Apt Elev 36'	Rwy 36'	3000
MISSED APCH: Climb STRAIGHT AHEAD to 1000', then turn LEFT to LARMO climbing to 3000', or as directed.						
Alt Set: hPa		Rwy Elev: 1 hPa		Trans level: By ATC		Trans alt: 3000'
						MSA ARP



DIST to RWY03	6.0	5.0	4.0	3.0	2.0	1.0
ALTITUDE	1970'	1660'	1350'	1030'	720'	400'



Gnd speed-Kts	70	90	100	120	140	160	REIL PAPI-L	1000' ↑
Descent Angle	3.00°	372	478	531	637	849		
MAP at RW03								

STRAIGHT-IN LANDING RWY 03	
LNAV	
MDA(H) 480' (444')	
A	RVR 1500m
B	VIS 1600m
C	2000m
D	2400m

PANS OPS

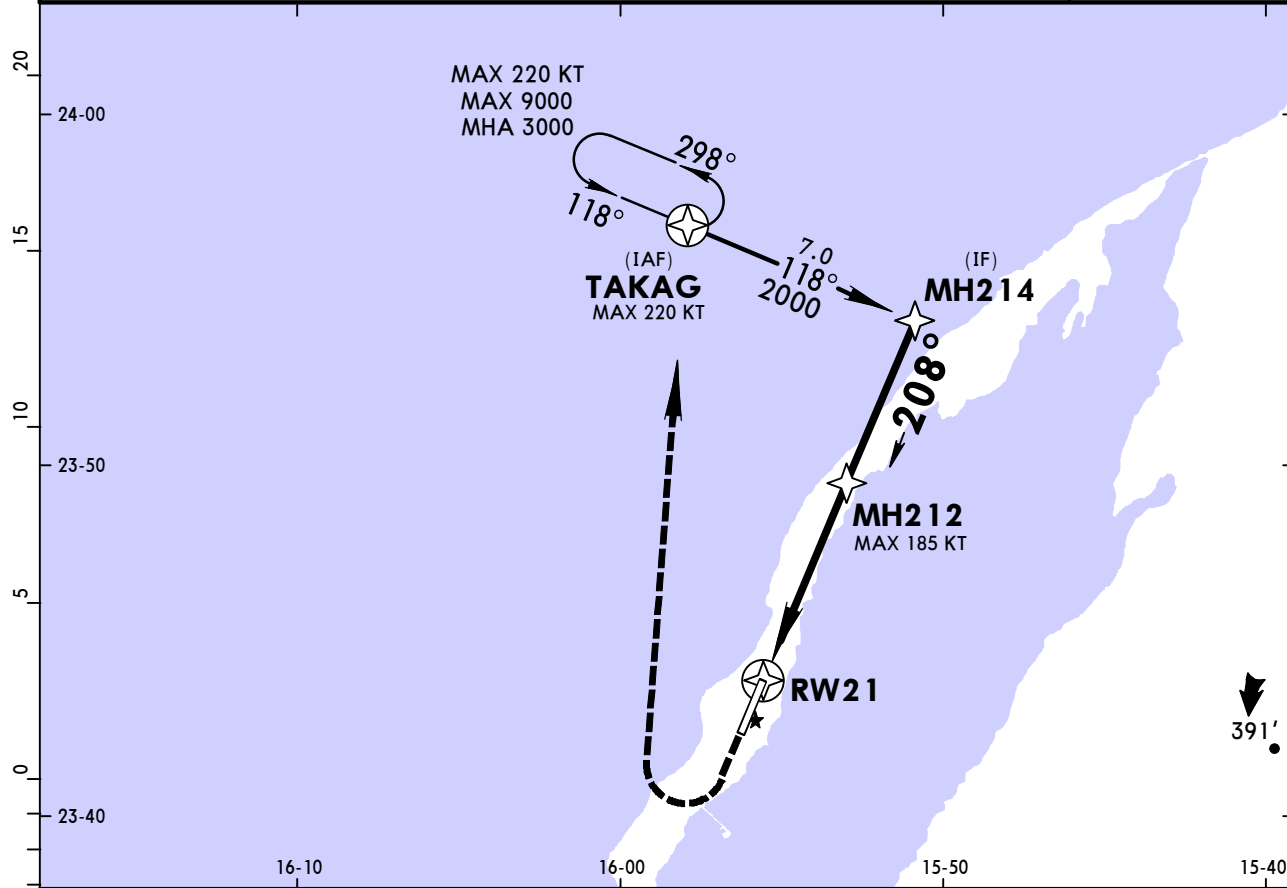
GMMH/VIL
DAKHLA INTL

JEPPESEN

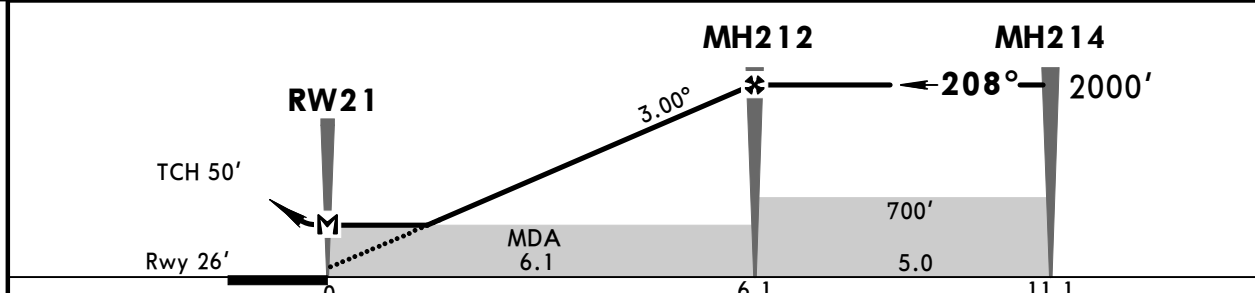
DAKHLA

22 MAR 19 **(12-2)** **Eff 28 Mar** **RNAV (GNSS) Rwy 21**

DAKHLA Approach				DAKHLA Tower	
119.5				118.1	
RNAV	Final Apch Crs 208°	Procedure Alt MH212 2000' (1974')	LNAV MDA(H) 380' (354')	Apt Elev 36' Rwy 26'	3000
MISSED APCH: Climb STRAIGHT AHEAD to 1000', then turn RIGHT to TAKAG climbing to 3000', or as directed.					
Alt Set: hPa		Rwy Elev: 1 hPa	Trans level: By ATC		Trans alt: 3000'
					MSA ARP



DIST to RWY21	1.0	2.0	3.0	4.0	5.0	6.0
ALTITUDE	400'	710'	1030'	1340'	1660'	1970'



Gnd speed-Kts	70	90	100	120	140	160	REIL PAPI-L	1000'
Descent Angle	3.00°	372	478	531	637	743		
MAP at RW21								

STRAIGHT-IN LANDING RWY 21

LNAV

MDA(H) **380'** (354')

A		
B	1600m	
C		
D	2000m	

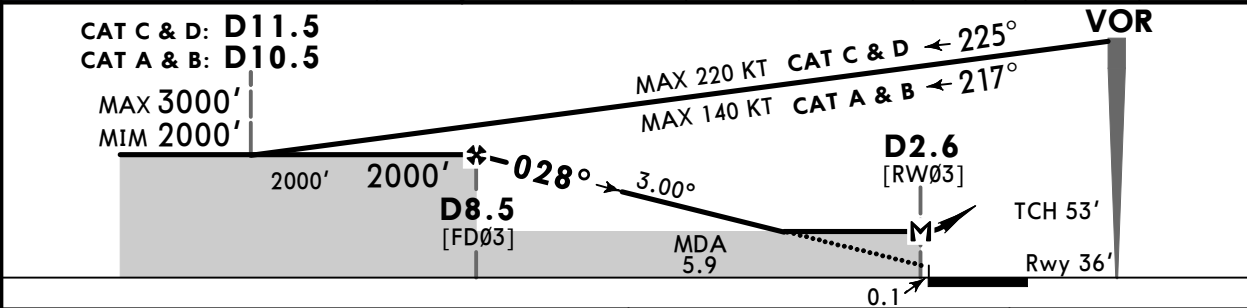
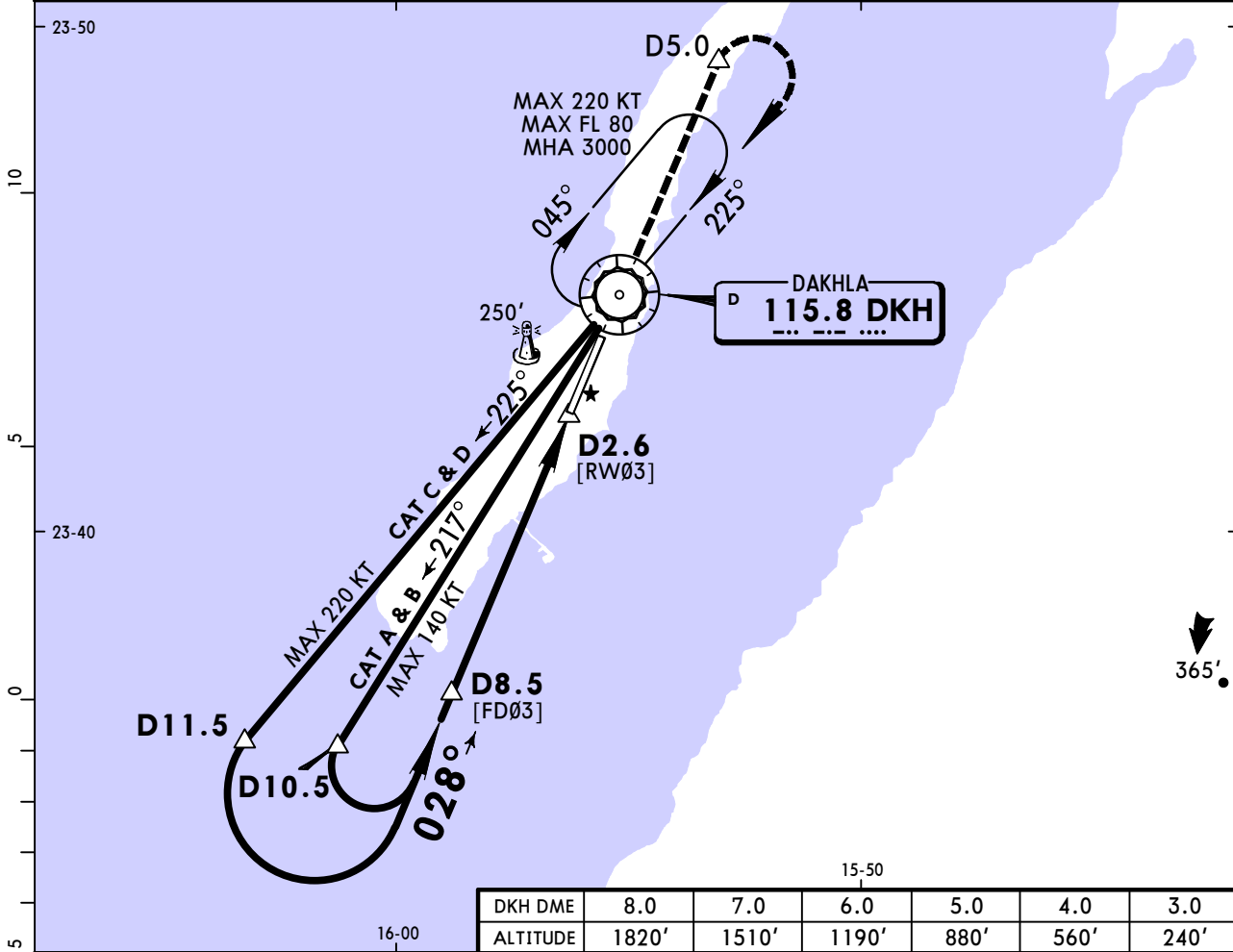
CHANGES: None.

GMMH/VIL
DAKHLA INTL

JEPPESEN
22 MAR 19 **(13-1)** Eff 28 Mar

DAKHLA
VOR Rwy 03

DAKHLA Approach			DAKHLA Tower		
119.5			118.1		
VOR DKH 115.8	Final Apch Crs 028°	Procedure Alt D8.5 2000' (1964')	MDA(H) 490' (454')	Apt Elev 36' Rwy 36'	
MISSED APCH: Climb on RWY heading to D5.0, turn RIGHT to VOR climbing to 3000', or as directed.					MSA DKH VOR
Alt Set: hPa		Rwy Elev: 1 hPa	Trans level: By ATC		Trans alt: 3000'
DKH DME required.					



Gnd speed-Kts	70	90	100	120	140	160	REIL PAPI-L	D5.0	
Descent Angle	3.00°	372	478	531	637	743			849
MAP at D2.6									

STRAIGHT-IN LANDING RWY 03			CIRCLE-TO-LAND		
MDA(H) 490' (454')			MDA(H)		
A	RVR 1500m	100	580' (544')		1600m
B	VIS 1600m	135	680' (644')		2400m
C	2000m	180	730' (694')		3600m
D	2400m	205			

Chart changes since cycle 15-2023

ADD = added chart, REV = revised chart, DEL = deleted chart.

ACT	PROCEDURE IDENT	INDEX	REV DATE	EFF DATE
-----	-----------------	-------	----------	----------

DAKHLA, (DAKHLA INTL - GMMH)

TERMINAL CHART CHANGE NOTICES

No Chart Change Notices for Airport GMMH